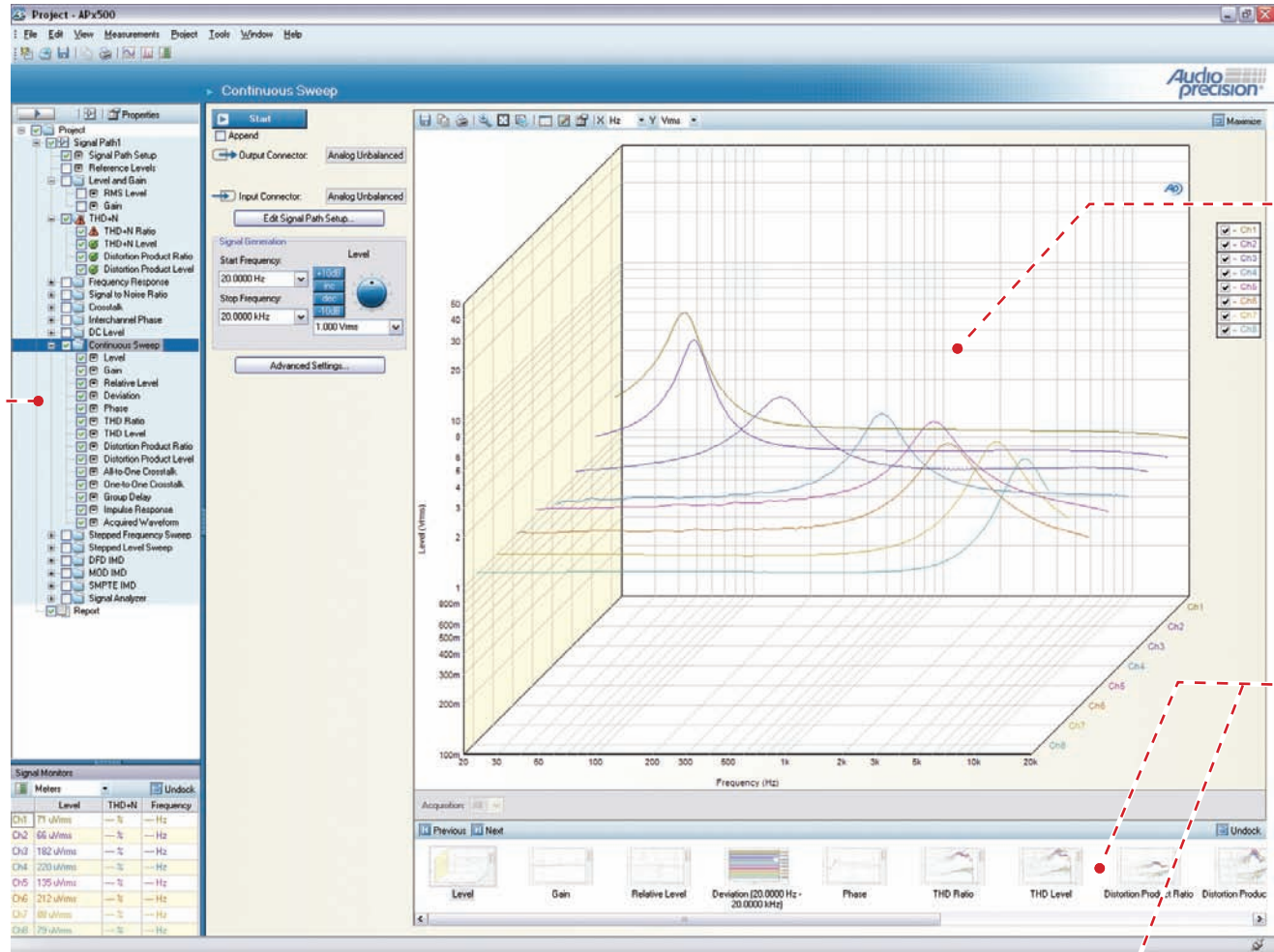




# measurement software

for Audio Precision Series 500 multichannel audio analyzers.



## Navigator

Choose measurement views and add signal paths in the Navigator.

Run automated sequences from the Navigator. Select the measurements to be included with a checkmark, and click Run.

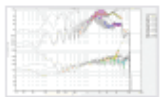
As the sequence runs, measurements are flagged with pass/fail status.

## Measurement View

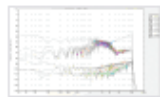
Each measurement has one or more 8-channel views, displayed as meter bars or 2D or 3D X-Y graphs. This view shows the frequency response of an 8-channel equalizer in a 3D view.

## Selector

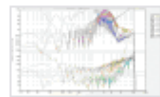
Move quickly from view to view by clicking a thumbnail image in the measurement Selector.



THD Level



Distortion Product Ratio



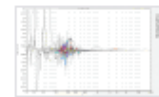
Distortion Product Level



All-to-One Crosstalk



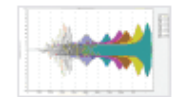
One-to-One Crosstalk



Group Delay



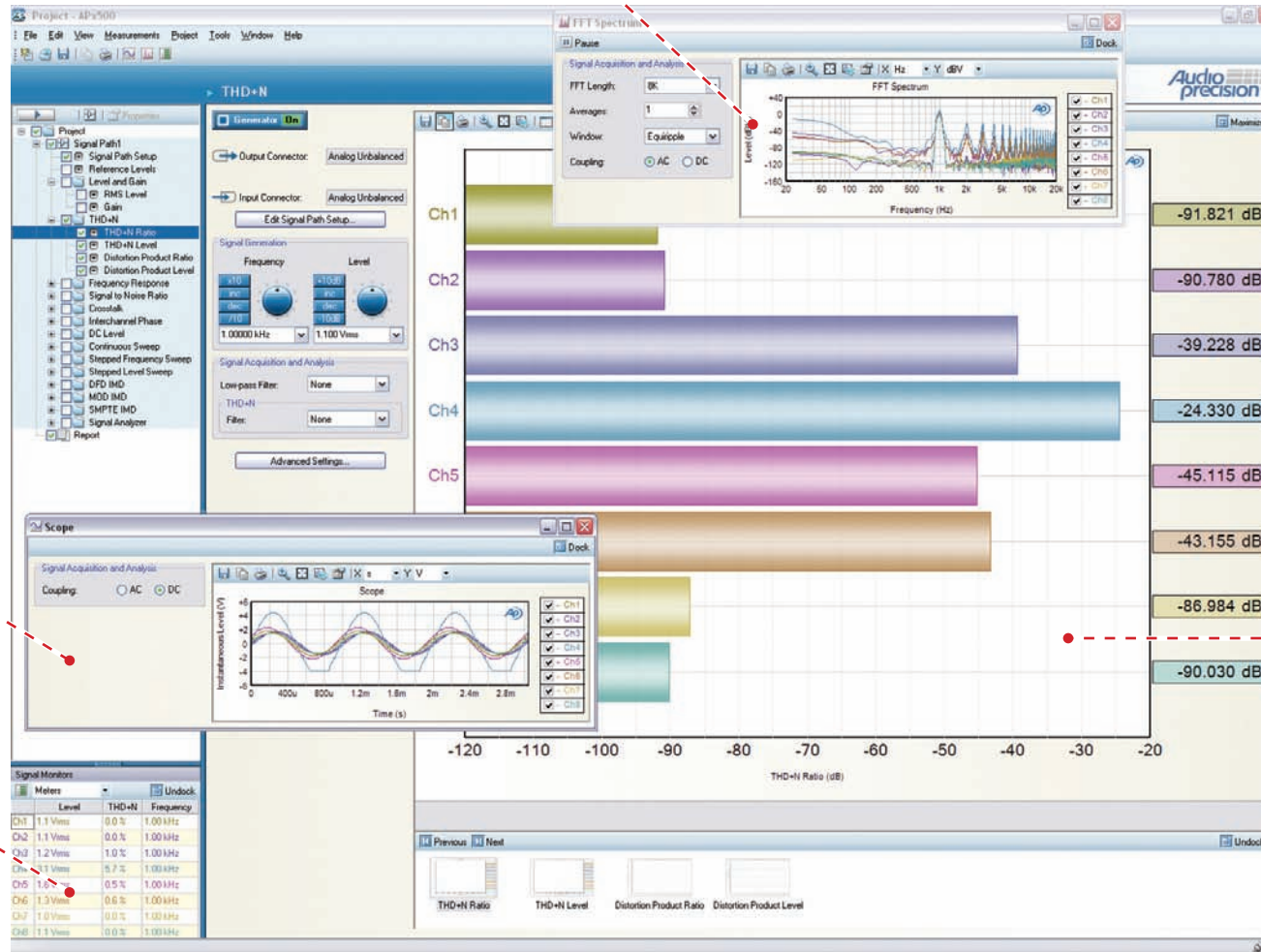
Impulse Response



Acquired Waveform

## Signal Monitors

Real-time signal monitors show 8 input channels in three views: Meters, Scope (time domain) and FFT (frequency domain). Monitors are docked under the Navigator, but can be undocked and placed wherever you want.



## Measurement View

This view shows 8 meter bars reading THD+N. Notice that the clipped waveform on channel 4 shows more distortion than the other channels in the measurement view and in the three Signal Monitors.